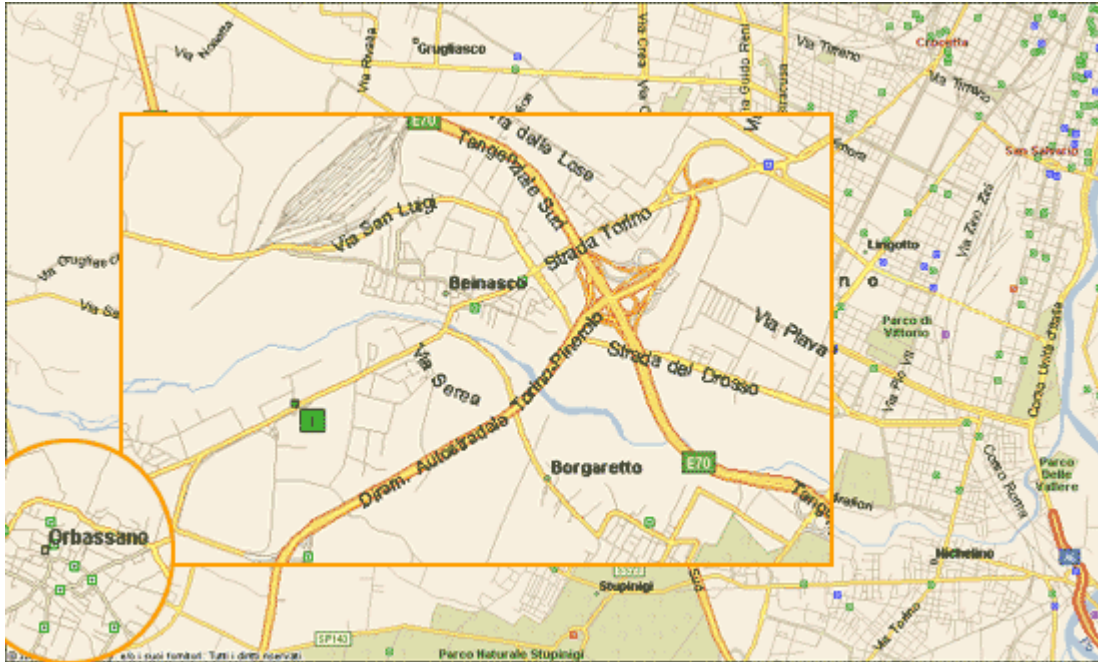


How to reach Us – Torino

ADDRESS

Strada Torino, 43/45
10043 Orbassano (TO)
Tel. +39 (0)11 9029611
Fax. +39 (0) 11 9029613



- **To reach us by car from the motorway Turin-Milan:**
Take the bypass of Turin (toll road) Head towards the southern bypass Piacenza / Savona (pay attention to the junction with the motorway Turin-Bardonecchia and the Frejus tunnel)
Take the motorway spur road for Pinerolo Orbassano (indicated on the enclosed map)
Take the first exit, Orbassano
At the first set of traffic lights turn right (direction Beinasco, not Orbassano)
Continue for about 1 Km. On the right, you will see the Fiat Research Centre(C.R.F.), in front of you (on the left) you will see a glass and steel building hosting our headquarters.
- **To reach us by car from Turin:**
It is advisable to take the main street Corso Orbassano and head towards Beinasco.
After passing the bridge across the Sangone you will find yourself on the driveway to Orbassano, called "Turin road" in the town of Orbassano.
The Fiat Research Centre, which is located just opposite our building, it is a well-known reference point for all Turinese.
- **To reach us by public service vehicles from Turin "Porta Nuova" railway station:**
Take the bus n.64 from the terminal opposite Turin "Porta Nuova" railway station (main street Corso Vittorio Emanuele II)
stay on board for approx 5 stops until you reach the station on the main street Corso Galileo Ferraris, called "Corso Stati Uniti"
Take the bus N.5 (which takes the suburban way up to Orbassano).
Get off at the station Fiat Research Centre at Orbassano: this stop is j opposite the our offices
- **To reach us by public service vehicles from Turin airport:**
We would suggest you take a taxi. Alternatively (at a lower cost but longer journey) you can take the shuttle bus linking the airport to Turin "Porta Nuova" railway station (a journey lasting about 40 mins, timetables can be found at www.turin-airport.com under 'information') and then follow the directions to reach us from the railway station.